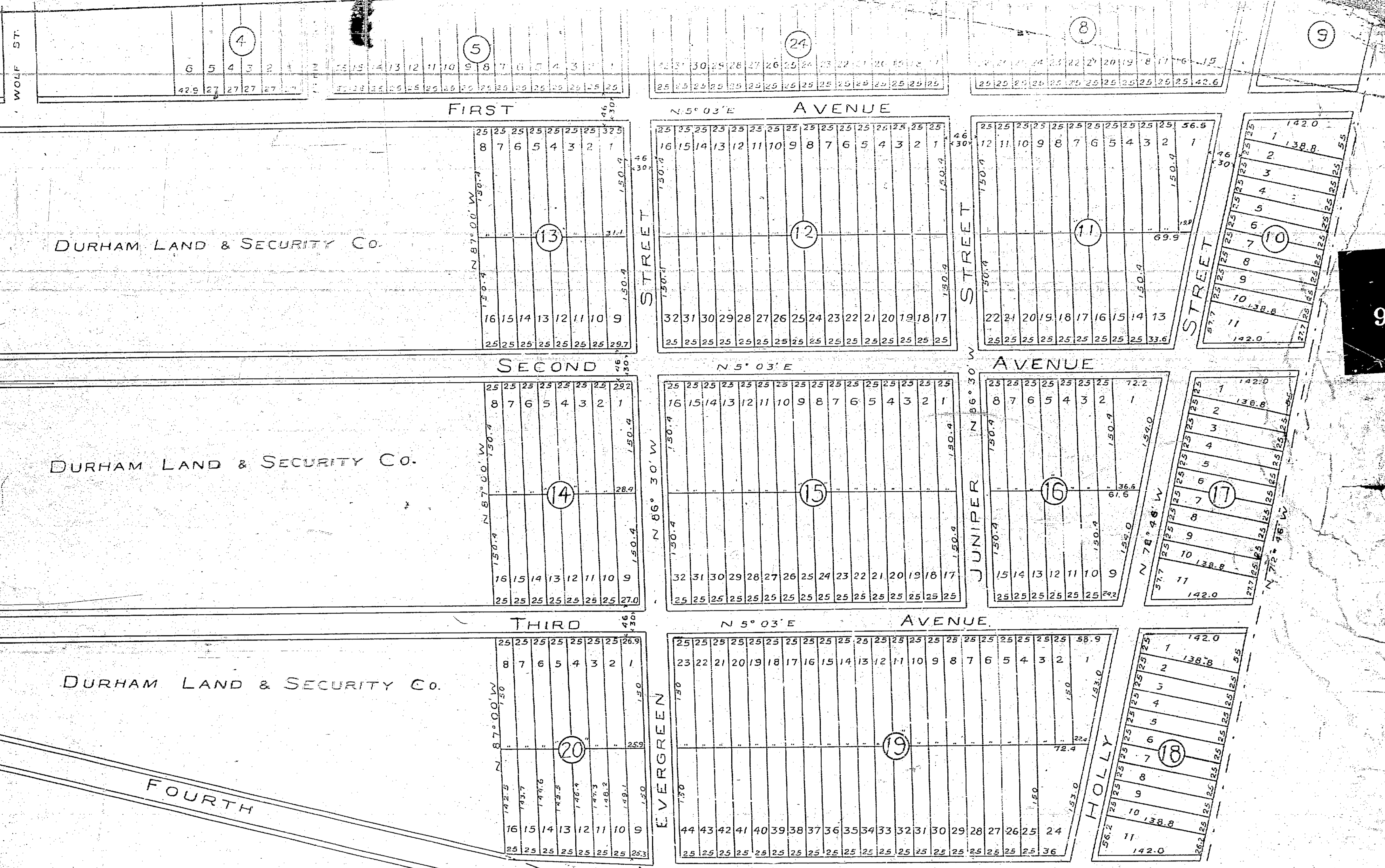
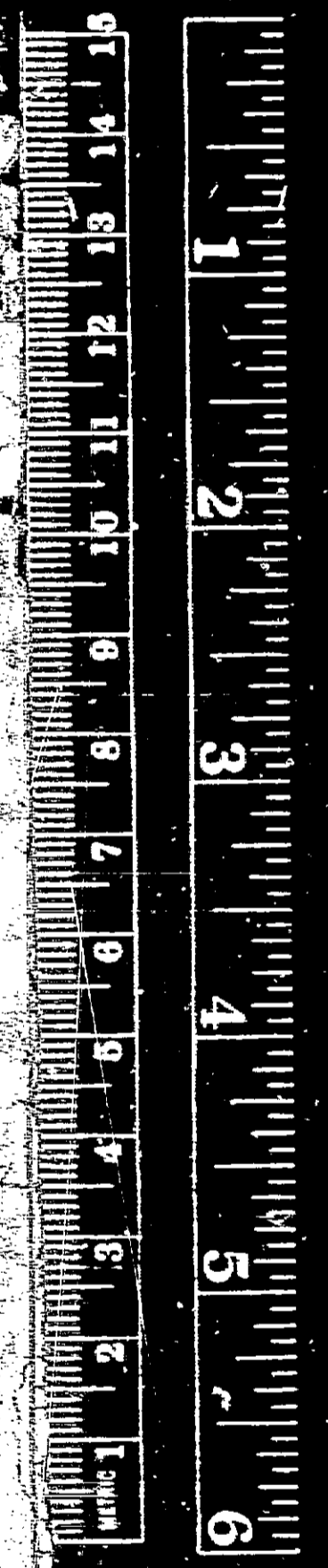


93



RE-SUBDIVISION OF
 "EASTERN HEIGHTS"
 PROPERTY OF
 NORTH EAST LAND CO.
 SHOWING LAND BOUGHT FROM J.A. ROCHELLE
 SURVEYED NOV. 1911 & APRIL 1912 BY J.E. WALKER, JR.
 BLOCKS 7, 8, 24, 25 CHANGED & RESTAKED JAN. 1916.



OFFICE OF
 Wm. M. PIATT E.E.M.S.
 DURHAM, N.C.

THIS MAP SHOWS THAT PART OF ORIGINAL,
 EAST OF FIRST AVENUE, WESTERN PART
 SHOWN ON OPPOSITE PAGE.

*Transferred from
 Book 3 Page 16*