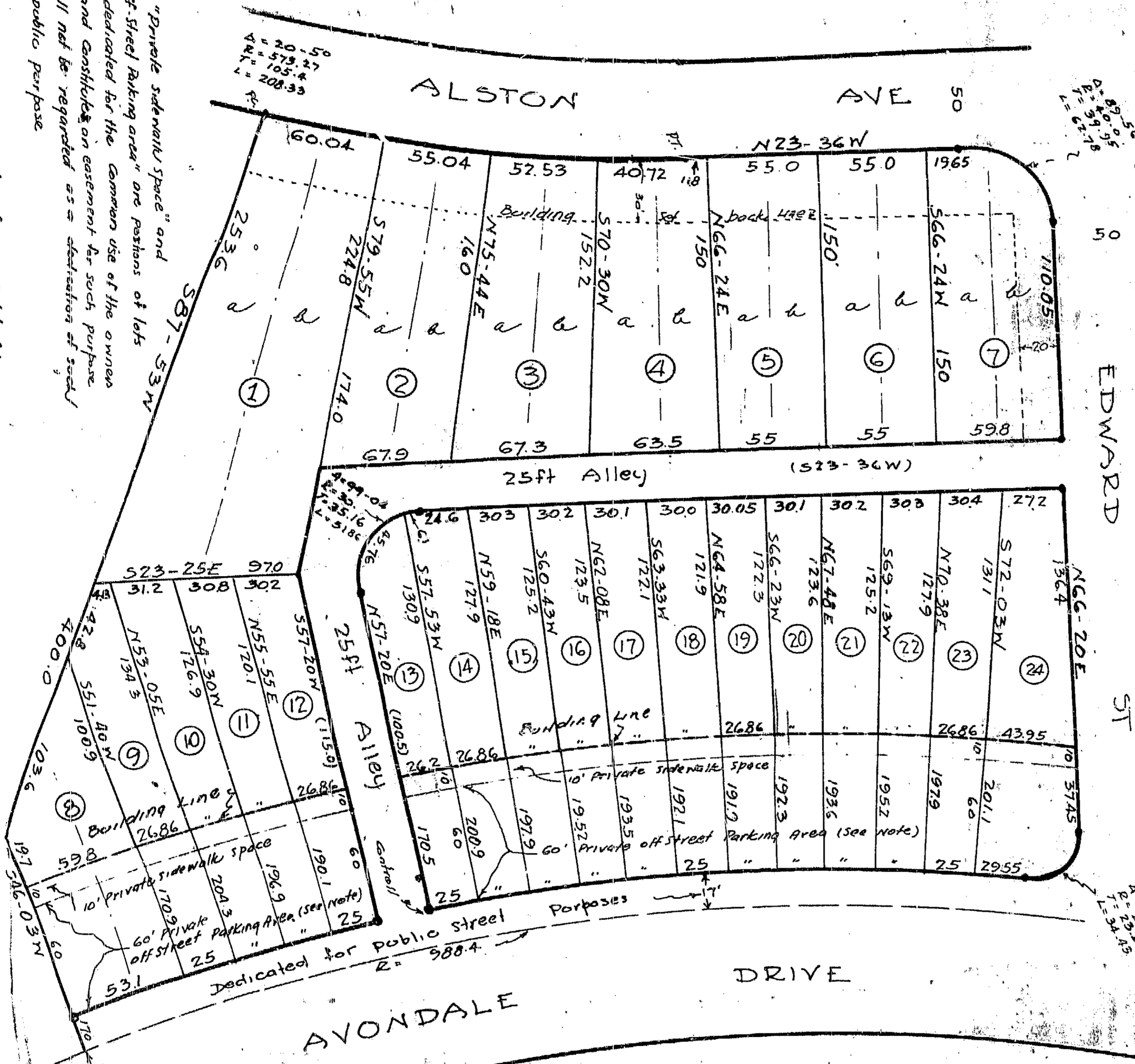


Note:
 The lot area designated "Private sidewalk space" and the lot area designated "Private off-street parking area" are portions of lots 8 to 24 both inclusive, which are so dedicated for the common use of the owners of said lots 8 to 24 both inclusive, and constitute an easement for such purposes running with the lands, and shall not be regarded as a dedication of said portions of said lots for any public purpose.

No deed of conveyance shall be made of any of lots 8 to 24, both inclusive, by which the eastern boundary shall fail to extend to Avondale Drive from the 25ft Alley shown hereon west thereof. This covenant runs with the land.



PROPERTY OF
 CENTRAL DEVELOPMENT CO., INC.
 WILLIAM MUIRHEAD
 Durham, N. C.

11 - AUG 47
 S.M. Cudde, CE.
 J. F. BARFIELD AUCTION SERVICE SELLING AGENTS

9-2-47
 Elsie V. Jones

RECORDED	FOR APPROVAL
9/2/47	IN ACCORDANCE
	WITH A
	PLAT HERETO
Frank L. Dieter 9/2/47	
AS BEING IN ACCORDANCE WITH AN ORDINANCE RECEPTIVE TO ACCEPTANCE OF NEW LOTS AND THE SUBDIVISION: TO BE EFFECTIVE MARCH 15, 1926 AND ALL AMENDMENTS.	
H. K. Kieffer SUPERVISOR OF PUBLIC WORKS	
A. P. ... PLAT NOT OF FILE FOR RECORD WITHIN 30 DAYS OF APPROVAL	

FILED
 SEP 20 1947
 REGISTER OF DEEDS
 DURHAM COUNTY, N. C.

123

BK
 18 B
 PG
 123