

HILLSBOROUGH Office For Lease

\$495/MONTH PLUS \$30 UTILITIES



126 W KING ST, SUITE 16, HILLSBOROUGH, NC 27278



Leasing a private office in Downtown Hillsborough where you can mix business and pleasure with the quaint retail scene and natural resources like The Riverwalk. Centrally located for client meetings. One block away from the Orange County Courthouse. Convenient to I-85 & I-40, RDU and RTP.

Emilee Collins, CCIM
(919) 730-7040
emilee@pickettsprouse.com

Matthew Morton
(919) 864-0864
matthew@pickettsprouse.com

Property Details

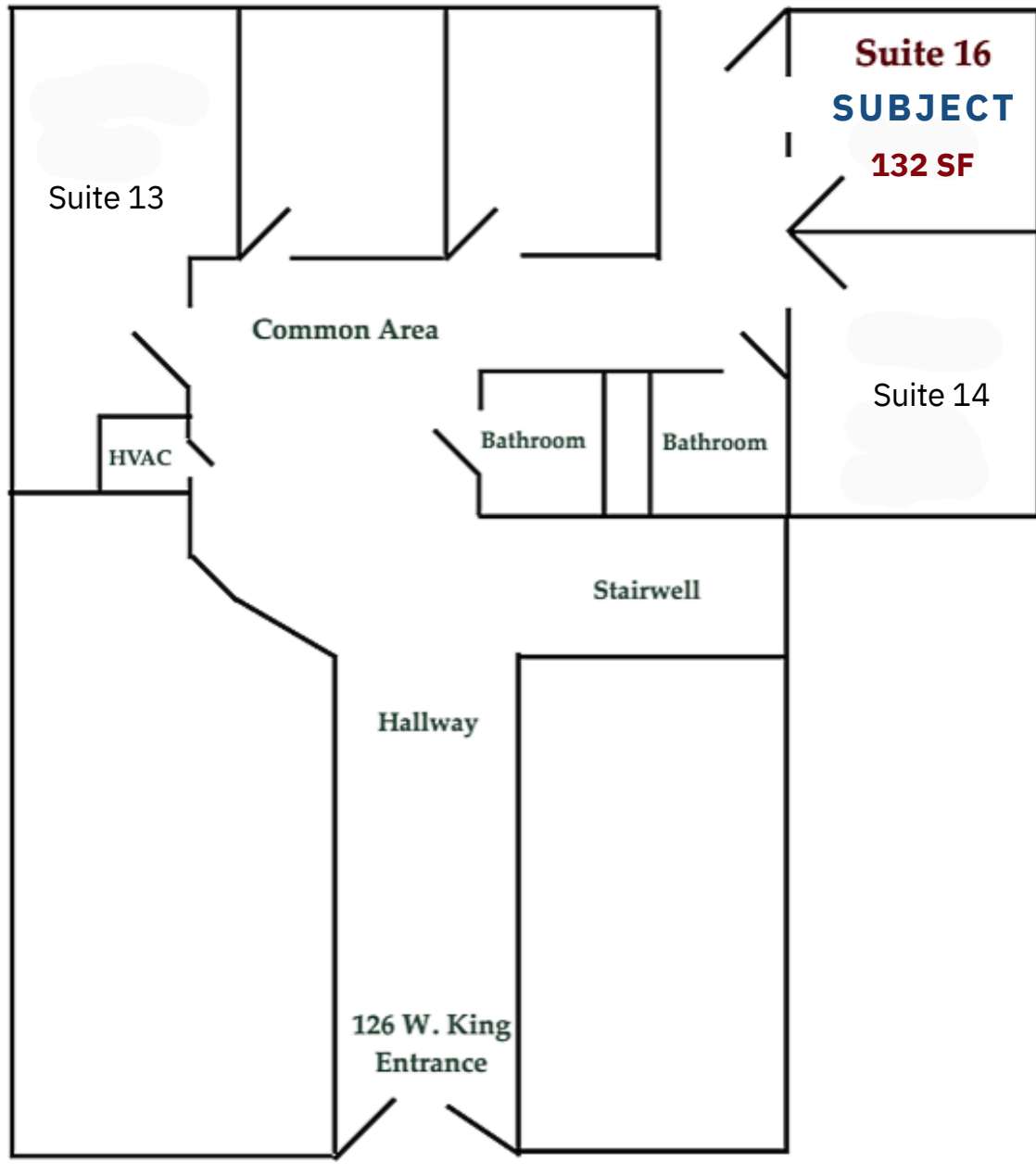
Monthly Lease Rate	\$495 + \$30 Utilities
Square Footage	132
Zoning	Town of Hillsborough Central Commercial District
Parcel Number	9874063501



Emilee Collins, CCIM
(919) 730-7040
emilee@pickettsprouse.com

Matthew Morton
(919) 864-0864
matthew@pickettsprouse.com

Floor Plan



***Square footage is approximate and not drawn to scale**