

Offices For Lease

121 N. CHURTON STREET, HILLSBOROUGH



- Office 1: \$650/Month—*329 SF
- Office 2: \$850/Month—*457 SF
- Office 3: \$575/Month—*254 SF
- Office 4: \$775/Month—*411 SF
- Heart of Historic Hillsborough
- Large Windows & Tall Ceilings
- Vibrant Arts, Dining & Retail Center
- Convenient to I-40 & I-85 / RTP

*Approximate SF includes common areas. Tenant to pay percentage of utilities.

Emilee Collins, Broker
(919) 730-7040

emilee@westandwoodall.com

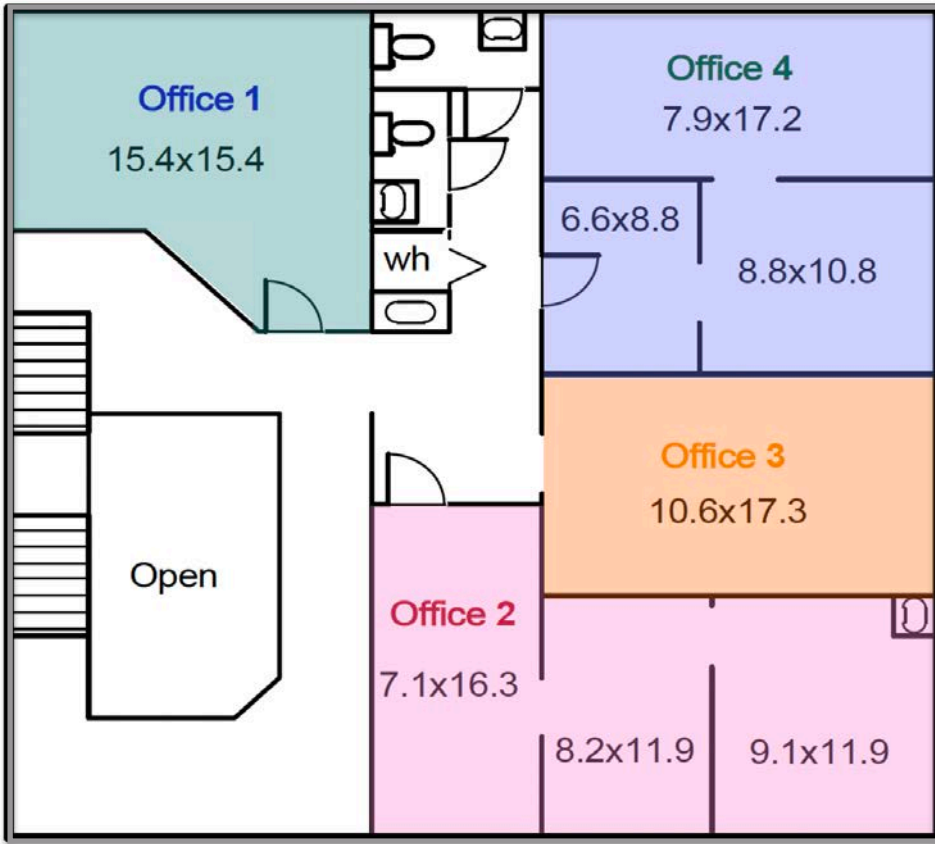


Mark O'Neal, CCIM/Broker
(919) 815-8303

mark.oneal@westandwoodall.com

www.PickettSprouse.com

Floor Plan



Hillsborough Map

