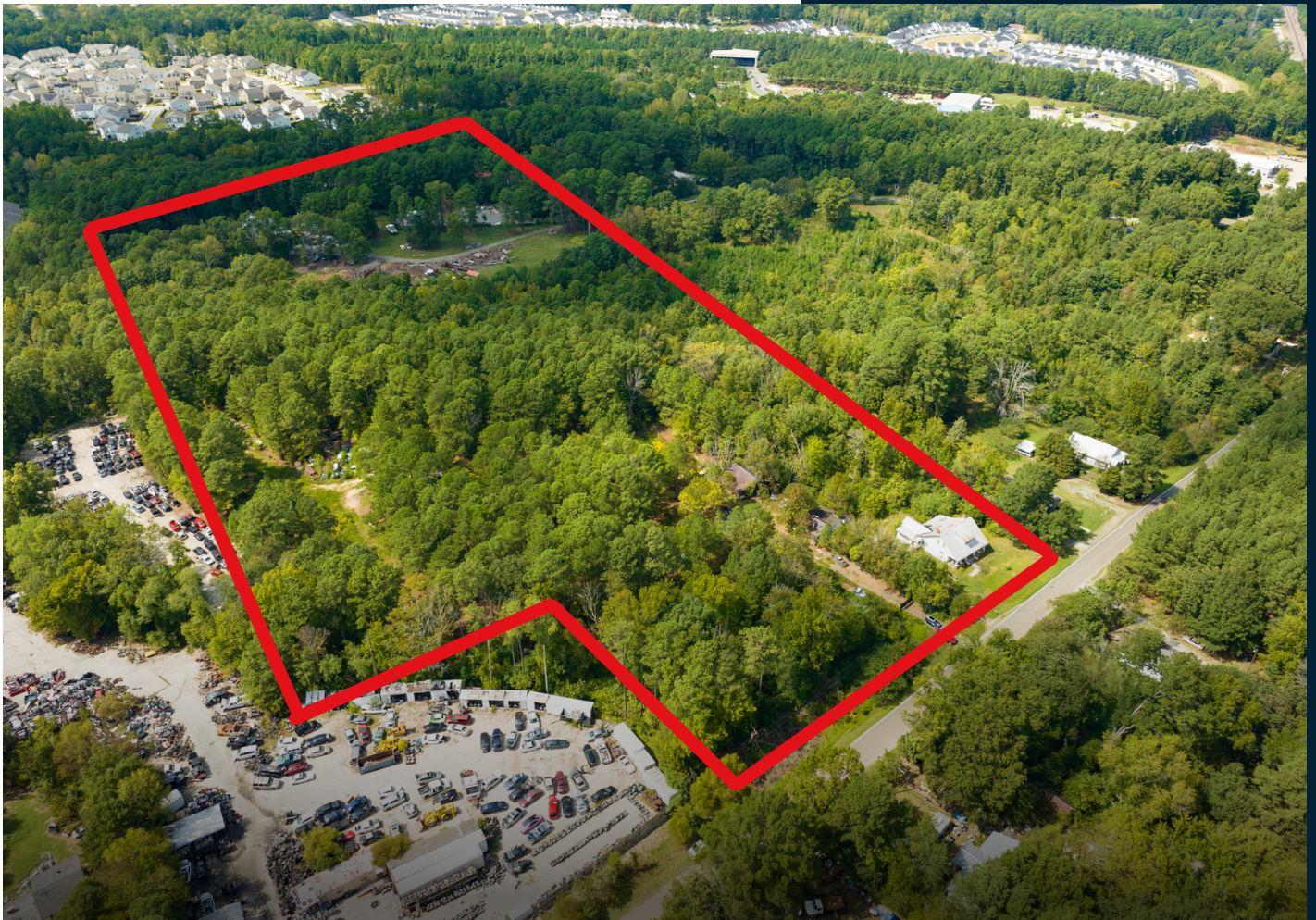


DURHAM

Land for Sale

 1202 WRENN ROAD

FOR SALE - \$695,000.00



This property encompasses 8± acres of land with Industrial Light zoning. It's worth noting that water and sewer infrastructure will need to be extended to the property. The land is suitable for the construction of flex/office space.

Mark Micol
(919) 287-3053
vernon@pickettsprouse.com

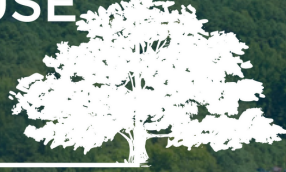
Property Details

Asking Price	\$695,000
Acreage	8.16
Zoning	IL
Parcel Number	0749398409
Water and Sewer	Will have to be extended
Best Use	Flex Space; Storage Units



**PICKETT
SPROUSE**

COMMERCIAL
REAL ESTATE



A WEST & WOODALL COMPANY

Mark Micol
(919) 287-3048
mark.micol@pickettsprouse.com

Pickett Sprouse Commercial Real Estate

PickettSprouse.com

(919) 493-0395

1901 Hillandale Rd, Suite 100
Durham, NC 27705