

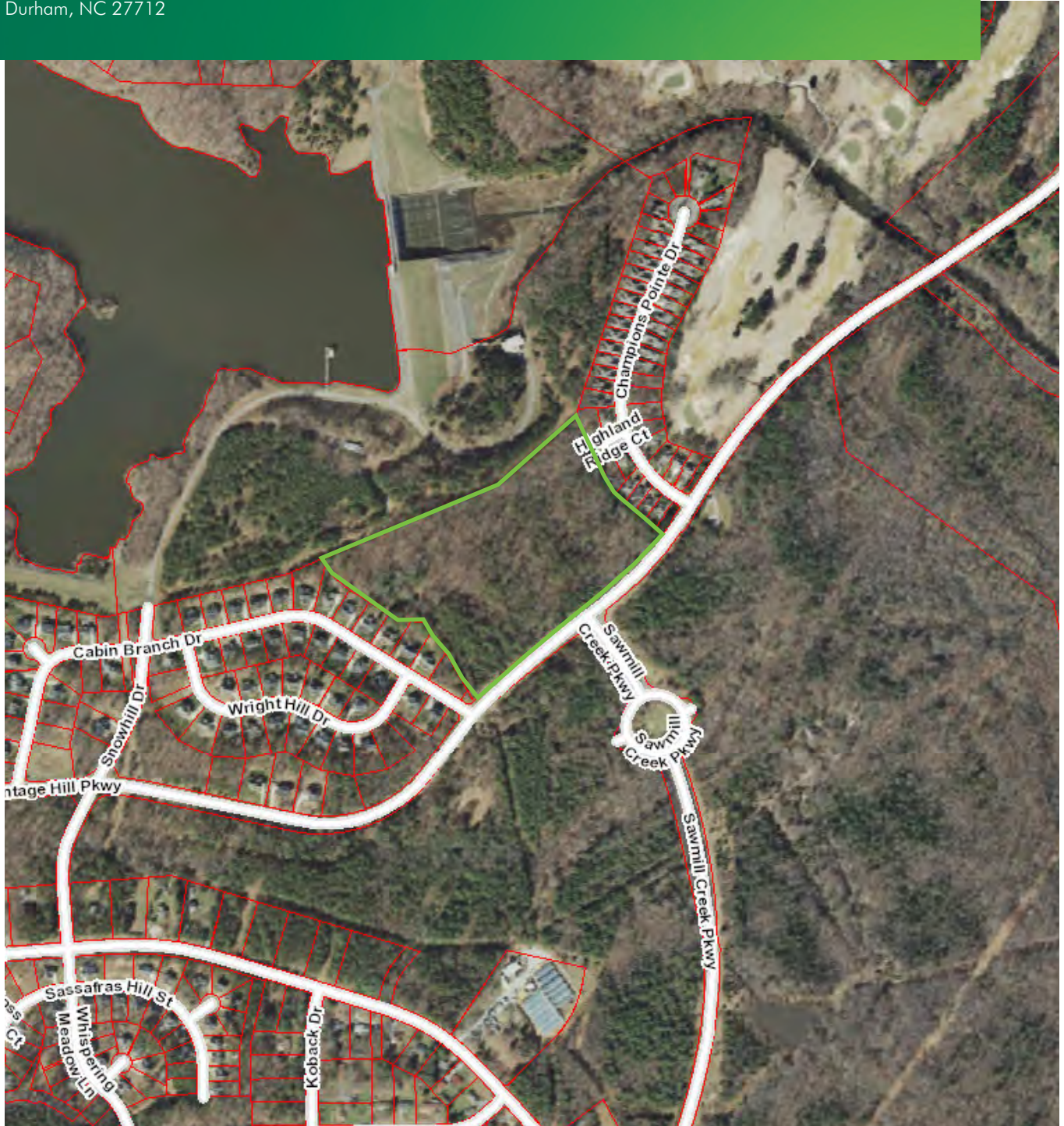
FOR SALE

# RESIDENTIAL LAND

TREYBURN

1201 VINTAGE HILL PARKWAY

Durham, NC 27712



[www.cbre.com/raleigh](http://www.cbre.com/raleigh)

**CBRE** | Raleigh

Part of the CBRE affiliate network

# FOR SALE RESIDENTIAL LAND

TREYBURN  
1201 VINTAGE HILL PARKWAY  
Durham, NC 27712

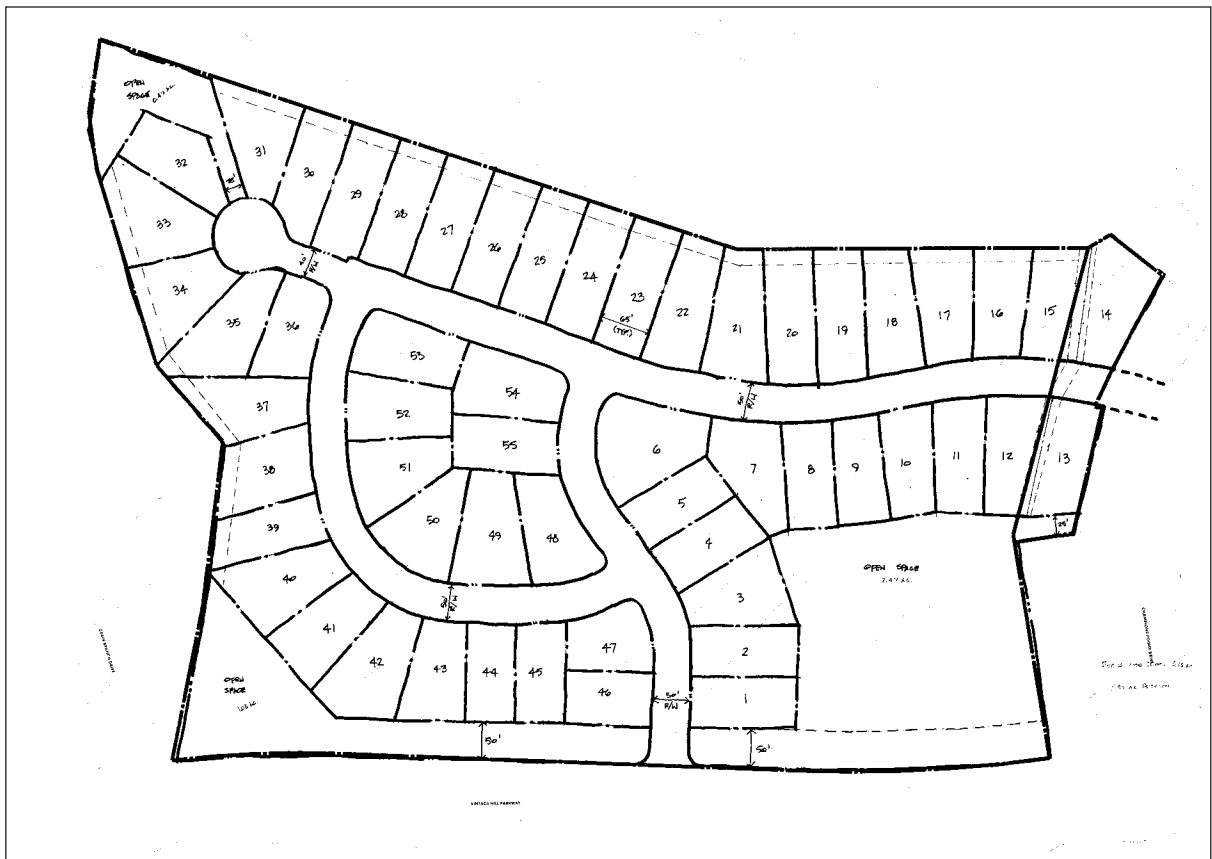


## PROPERTY FEATURES

- + +/- 20.67 acres
- + Zoned PDR 2.240
- + Preliminary sketch plan depicts a layout of sixty-one single-family detached lots
- + Municipal water and sewer located on site
- + Located north of Durham, within the Treyburn Country Club community, just minutes from US Highway 501 and NC Highway 157
- + Due diligence documents available upon request
- + \$1,189,500 sale price



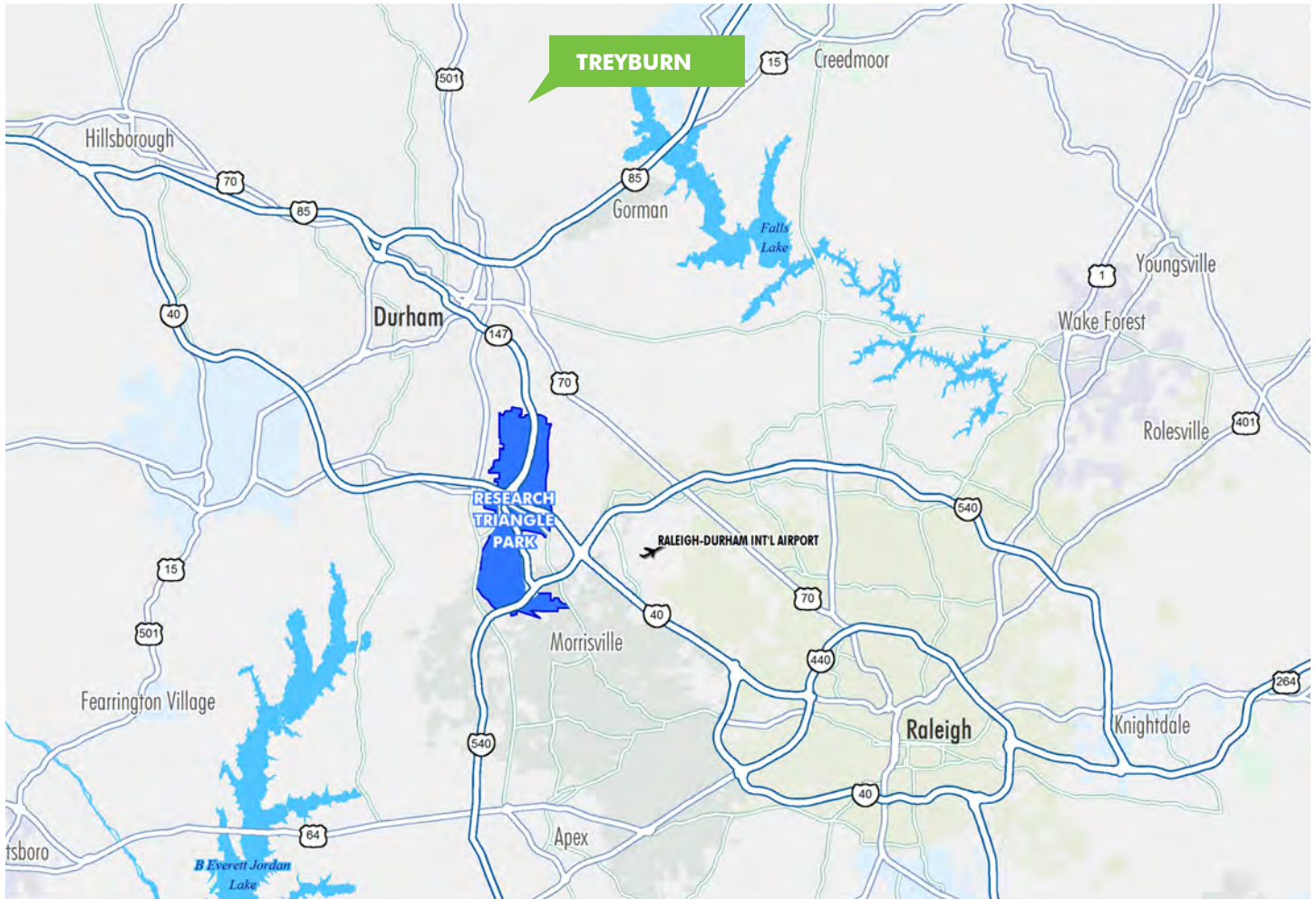
## PRELIMINARY SKETCH PLAN





# FOR SALE RESIDENTIAL LAND

**TREYBURN**  
1201 VINTAGE HILL PARKWAY  
Durham, NC 27712



## CONTACT US

### **CARLTON MIDYETTE, III**

First Vice President  
+1 919 831 8199  
carlton.midyette@cbre-raleigh.com

© 2017 CB Richard Ellis - Raleigh LLC. The information contained in this document has been obtained from sources believed reliable. While CB Richard Ellis - Raleigh LLC does not doubt its accuracy, CB Richard Ellis - Raleigh LLC has not verified it and makes no guarantee, warranty or representation about it. It is your responsibility to independently confirm its accuracy and completeness. Any projections, opinions, assumptions or estimates used are for example only and do not represent the current or future performance of the property. The value of this transaction to you depends on tax and other factors which should be evaluated by your tax, financial and legal advisors. You and your advisors should conduct a careful, independent investigation of the property to determine to your satisfaction the suitability of the property for your needs.

Photos herein are the property of their respective owners and use of these images without the express written consent of the owner is prohibited.

[www.cbre.com/raleigh](http://www.cbre.com/raleigh)

**CBRE** | Raleigh

Part of the CBRE affiliate network