

Partnership. Performance.



**OFFICE PARCEL FOR SALE**

## Opportunity

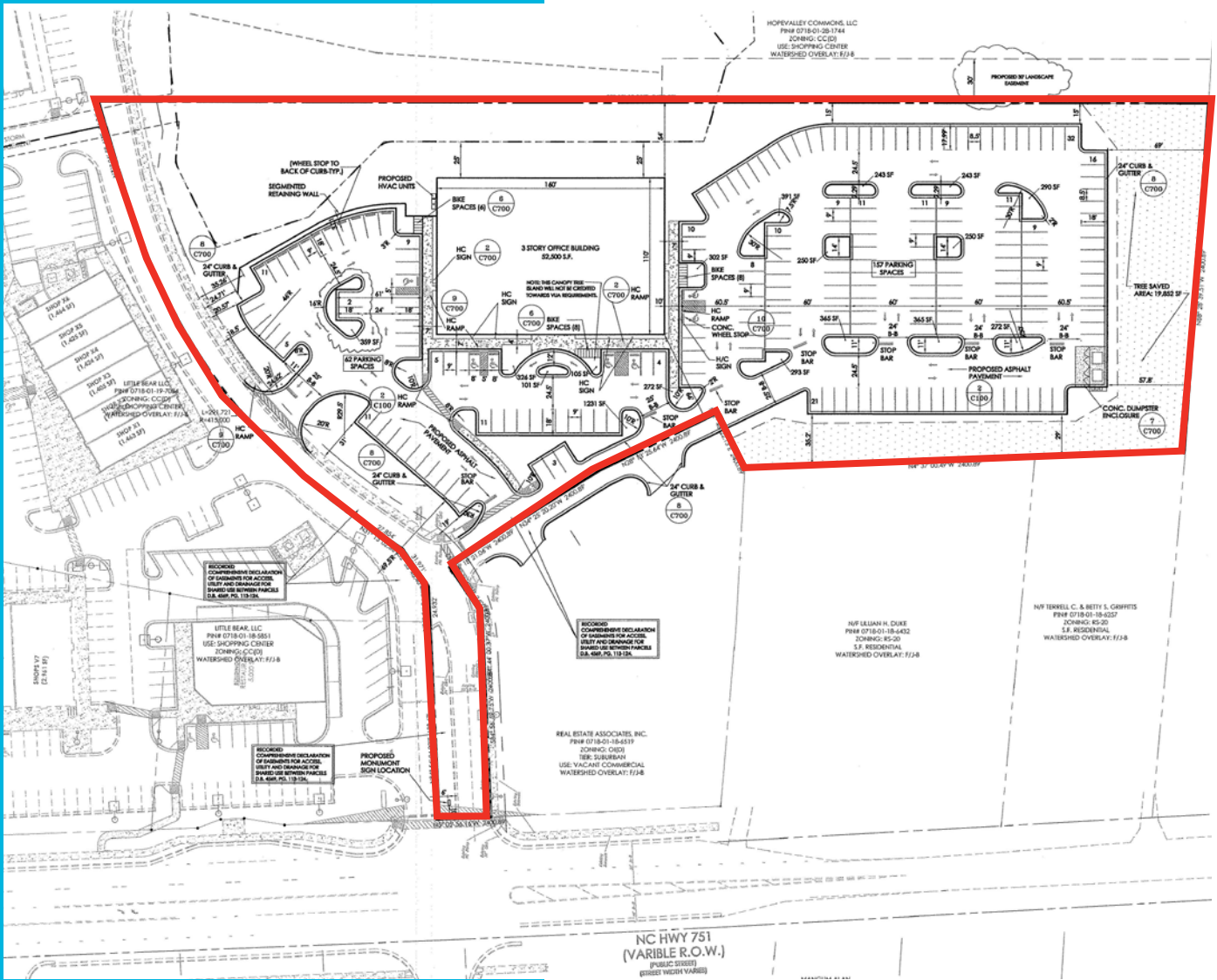
Office parcel; retail pad with drive thru. Excellent location at the highly visible, recently improved intersection of NC Hwy. 751, NC Hwy. 54 and the new Garrett Road extension.

**Arnold Siegmund**  
Principal, Brokerage  
919.420.1573  
arnold.siegmund@avisonyoung.com

# Hope Valley Commons

**1125 W. NC Hwy. 54**  
Durham, NC 27707





# Hope Valley Commons

**1125 W. NC Hwy. 54**  
Durham, NC 27707

## Available for Sale

Type	Office Parcel; Retail pad with drive thru
Size	Accommodates up to a 52,500 sf building
Location	Excellent location at the highly visible, recently improved intersection of NC Hwy. 751, NC Hwy. 54 and the new Garrett Road extension
Asking Price	Call for pricing
Improvements	Storm water requirements are in place. No additional road improvements necessary



**Arnold Siegmund**  
Principal, Brokerage  
919.420.1573  
arnold.siegmund@avisonyoung.com

5440 Wade Park Boulevard, Suite 200 Raleigh, NC 27607 | 919.785.3434 | avisonyoung.com  
The information contained herein was obtained from sources believed reliable; however, Avison Young makes no guarantees, warranties, or representations as to the completeness or accuracy thereof. The presentation of this property is submitted subject to errors, omissions, changes of price or conditions prior to sale or lease, or withdrawal without notice.