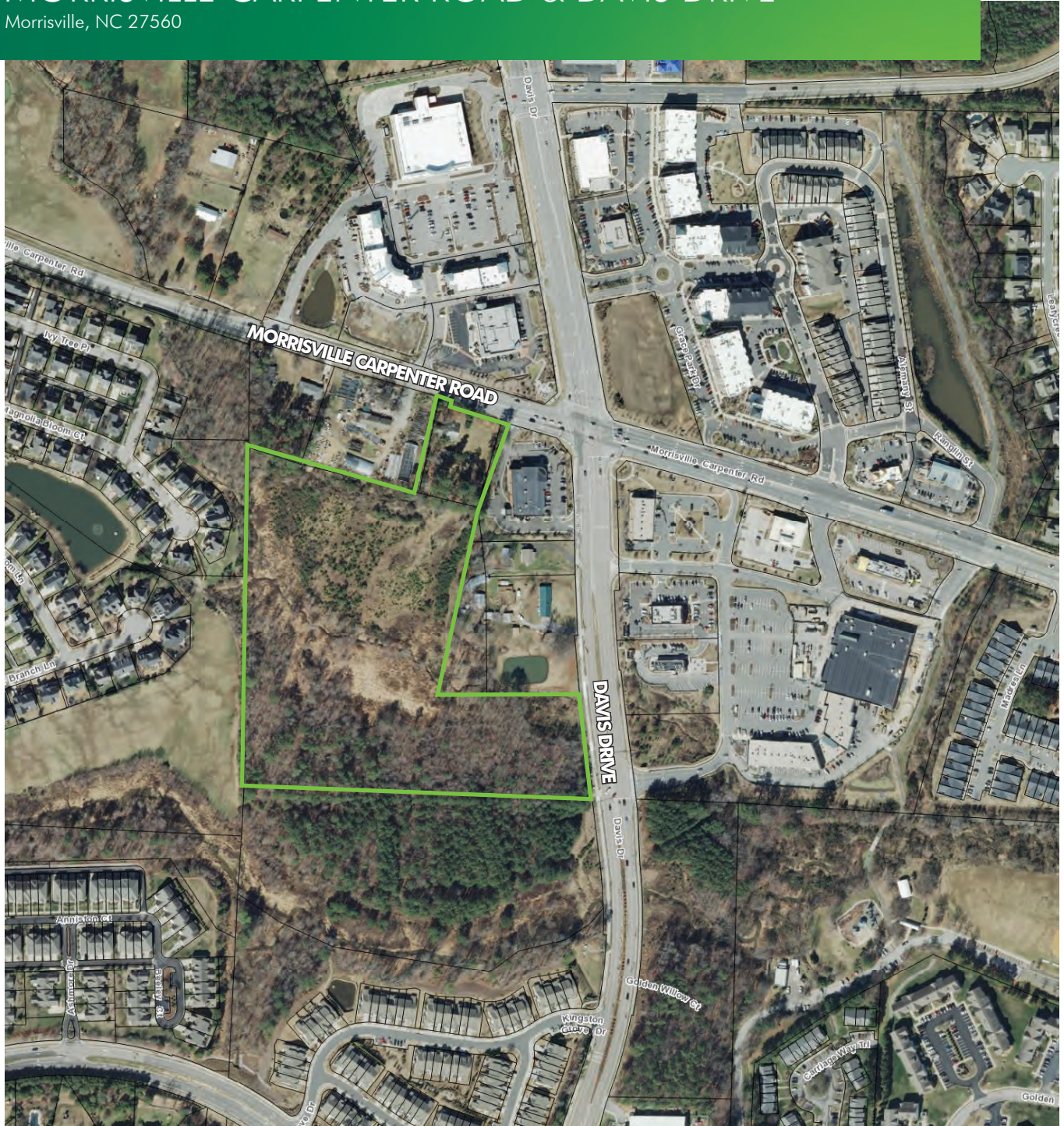


FOR SALE

# RESIDENTIAL/COMMERCIAL DEVELOPMENT OPPORTUNITY

## MORRISVILLE CARPENTER ROAD & DAVIS DRIVE

Morrisville, NC 27560



[www.cbre.us/raleigh](http://www.cbre.us/raleigh)

**CBRE** | Raleigh

Part of the CBRE affiliate network

# FOR SALE RESIDENTIAL/COMMERCIAL LAND

Morrisville, NC 27560



## PROPERTY FEATURES

- + Two contiguous parcels totaling +/- 16.21 acres
- + Currently zoned Low Density Residential (LDR) (Town of Morrisville ETJ)
- + The zoning district allows single family detached residential developments with a net density between 1 and 4.5 units per acre. For more information on permitted uses, click [here](#)
- + Future land use calls for Low Density Residential
- + Town of Cary water and sewer services
- + Multifamily sketch depicts potential 222 units on the property
- + \$2,100,000 sale price

| PIN#       | Address                         | Acreage | Current Zoning          |
|------------|---------------------------------|---------|-------------------------|
| 0745437454 | 1107 Morrisville Carpenter Road | 1.13    | Low Density Residential |
| 0745424805 | 0 Davis Drive                   | 15.08   | Low Density Residential |



## PROPERTY TOPOGRAPHY

