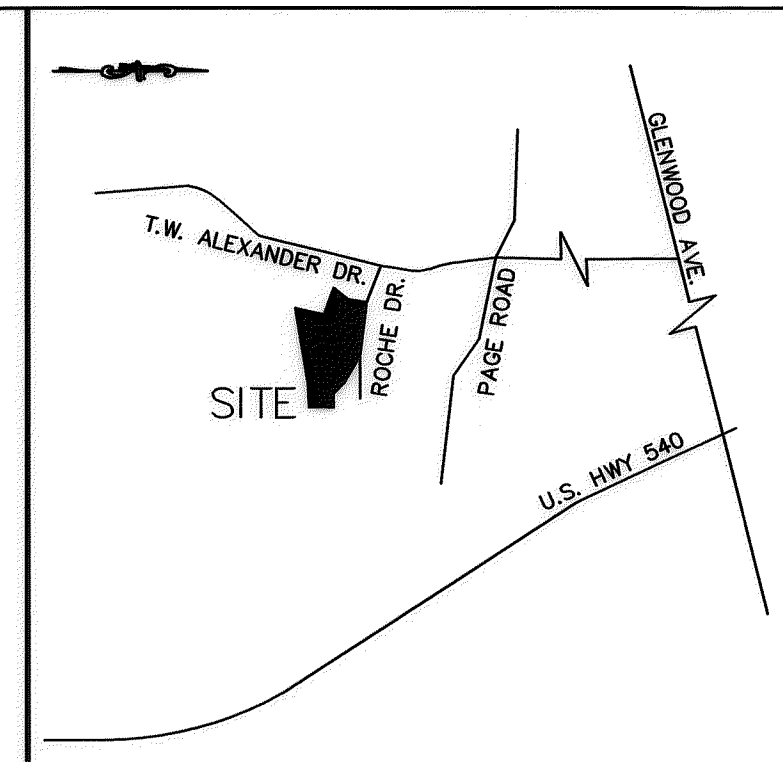


I, MICHAEL A. MOSS, A PROFESSIONAL LAND SURVEYOR LICENSED UNDER THE PROVISIONS OF CHAPTER 89C OF THE GENERAL STATUTES, HEREBY CERTIFY THAT THIS PLAT AND PLAN OF CONDOMINIUM ACCURATELY DEPICTS THE LEGAL BOUNDARIES AND PHYSICAL LOCATION OF THE UNITS AND OTHER IMPROVEMENTS RELATIVE TO THOSE BOUNDARIES.

*M.A. Moss* 6-27-18  
 PROFESSIONAL LAND SURVEYOR L-3794

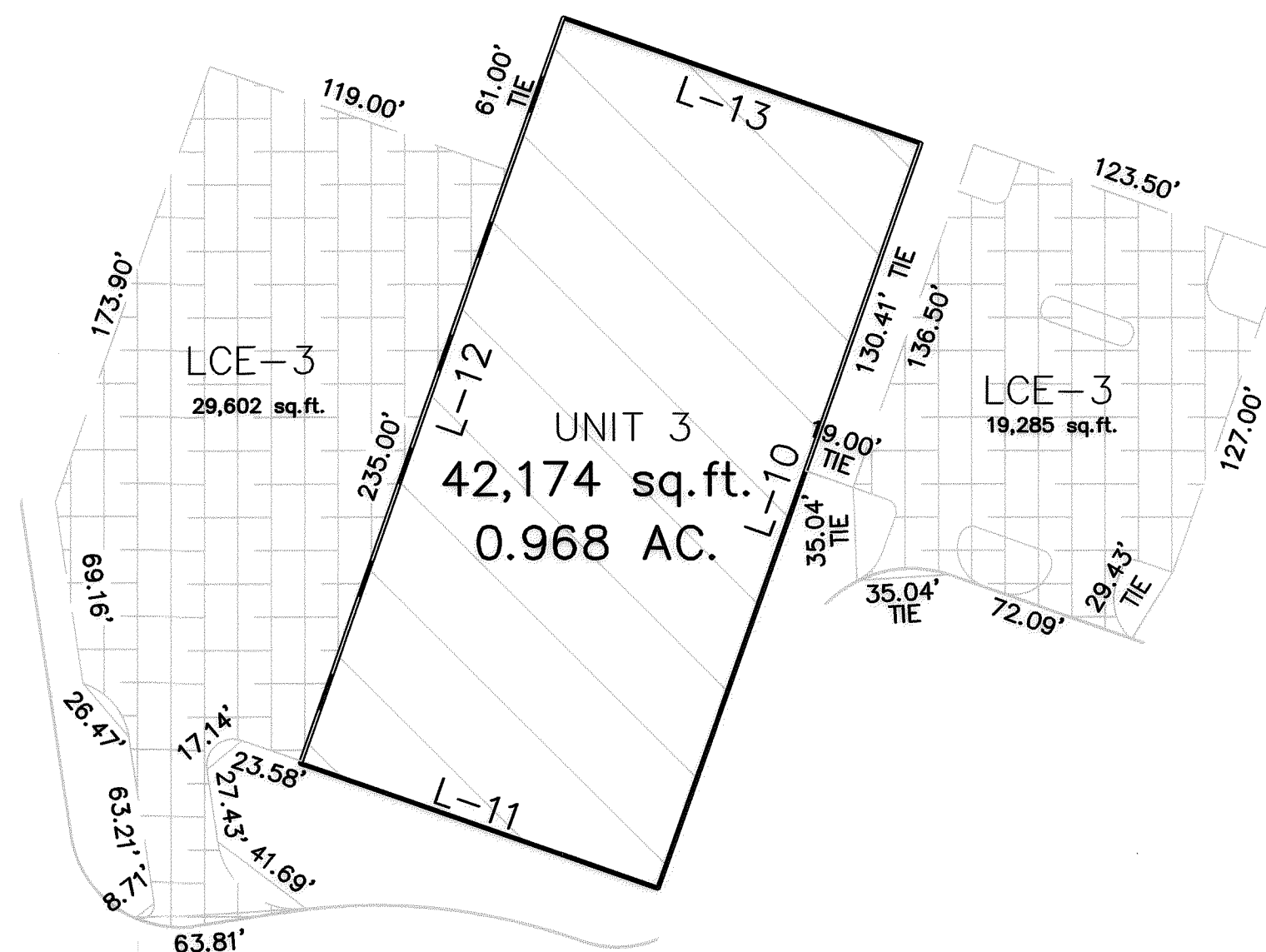


VICINITY MAP

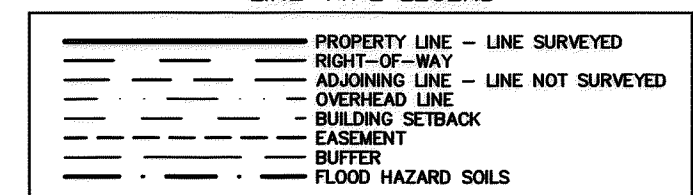
NC GRID NAD 83(NSRS 2011)

**LEGEND:**

- EIP - EXISTING IRON PIPE
- EPK - EXISTING PK NAIL
- NIP - NEW IRON PIPE SET
- R/W - RIGHT OF WAY
- CATV - CABLE TV BOX
- EB - ELECTRIC BOX
- TEL - TELEPHONE PEDESTAL
- PP - POWER POLE
- OHL - OVERHEAD LINE
- LP - LIGHT POLE
- WM - WATER METER
- WV - WATER VALVE
- CO - SEWER CLEAN-OUT



LINE TYPE LEGEND



PLAT OF CONDOMINIUM  
**ALEXANDER INDUSTRIAL PARK  
 COMDOMINIUM PLAT**

OWNER: BCP AIP, LLC  
 REF: D.B. 7959, PG. 186  
 REF: P.B. 182, PG. 312

TRIANGLE TOWNSHIP  
 DURHAM COUNTY, NORTH CAROLINA



SCALE 1"=60'

AUGUST 12, 2017

ZONED IL

PIN # 0758-01-18-3058

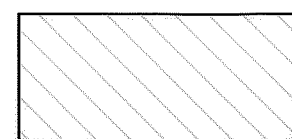
SHEET 4 OF 4

LINE	BEARING	DISTANCE
L-1	S30°12'27"E	129.12'
L-2	S77°06'49"E	11.88'
L-3	S14°25'57"W	113.88'
L-4	S 41°39'33" E	609.57'
L-5	N 19°23'24" E	514.02'
L-6	S 70°37'34" E	211.95'
L-7	N 19°22'57" E	514.05'
L-8	N 70°37'00" W	212.02'
L-9	N 22°24'52" W	522.41'
L-10	S 70°37'00" E	297.00'
L-11	S 19°23'00" W	142.00'
L-12	N 70°37'00" W	297.00'
L-13	N 19°23'00" E	142.00'
L-14	S 10°17'50" W	435.78'
L-15	N 08°32'57" W	294.00'
L-16	N 81°27'03" E	175.00'
L-17	S 08°32'57" E	294.00'
L-18	S 81°27'03" W	175.00'

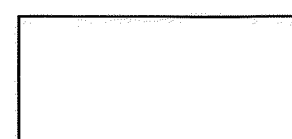
FOR REGISTRATION  
 Sharon A. Davis  
 REGISTER OF DEEDS  
 Durham County, NC  
 2018 Jun 28 11:28:26 AM  
 BK:13 PG:63-63  
 CONDOMINIUM PLATS  
 FEE: \$21.00  
 INSTRUMENT # 2018022248



2018022248



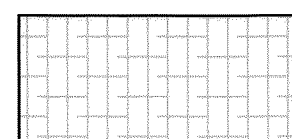
UNITS (NOTE THAT THE BUILDINGS AND IMPROVEMENTS WITHIN EACH UNIT ARE NOT PART OF THE UNIT BUT ARE SEPARATE PROPERTY OWNED BY THE UNIT OWNER.)



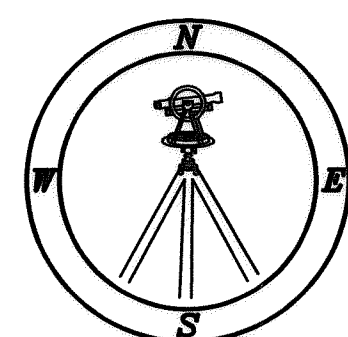
COMMON ELEMENTS (NOTE: ALL AREAS NOT DESIGNATED AS A UNIT OR LIMITED COMMON ELEMENT, INCLUDING THE WETLANDS, ARE COMMON ELEMENTS.)



WETLANDS-PART OF COMMON ELEMENT



LIMITED COMMON ELEMENTS ("LCE"): LCE-1: LCEs FOR UNIT 1 ARE DESIGNATED "LCE-1"; LCEs FOR UNIT 2 ARE DESIGNATED LCE-2; LCEs FOR UNIT 3 ARE DESIGNATED LCE-3.



ALEXANDER IND. PARK-DWG-CONDO PLAT (L-1)