

FLOOR PLAN - LEVEL LOWER PARKING - MASTER

Key	Name	Area
-----	------	------

MASTER COMMON ELEMENT		
A	ELECTRICAL	777 SF
B	ELEVATOR 3	105 SF
C	EMERGENCY ELECTRICAL	81 SF
D	MECHANICAL	368 SF
E	SHAFT	15 SF
F	STAIR 1	264 SF
G	STAIR 2	287 SF
H	TELECOM MDF	276 SF
J	UNASSIGNED	569 SF

MASTER LIMITED COMMON ELEMENT ASSIGNED TO OFFICE MASTER UNIT		
K	ELEVATOR CONTROL ROOM	186 SF
L	UNOCCUPIED	217 SF

MASTER LIMITED COMMON ELEMENT ASSIGNED TO RESIDENTIAL MASTER UNIT A & B		
M	CORRIDOR	147 SF
N	ELEV 1 & 2	214 SF
P	ELEVATOR LOBBY	493 SF
Q	PARKING	30,381 SF
R	SHAFT	93 SF
		34,474 SF



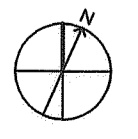
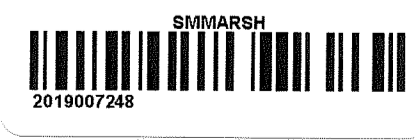
SLAB ELEVATIONS - LOWER PARKING	
Name	T.O.S.
LEVEL - LOWER PARKING	384' - 0"

- GENERAL NOTES:**
1. DIMENSIONS PROVIDED ON DESIGN DOCUMENTS ARE INITIATED FROM FIELD SURVEYED WORK POINTS AS INDICATED.
 2. DOT SYMBOLS AT DIMENSIONS INDICATE THE CENTERLINE OF THE REFERENCED ELEMENT.
 3. DECLARANT RESERVES THE RIGHT TO SUBJECT FLOORS 21 - 27 TO AN ADDITIONAL CONDOMINIUM DECLARATION AND TO CREATE ADDITIONAL UNITS AND COMMON ELEMENTS ON THOSE FLOORS.

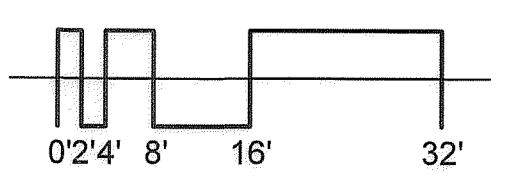
*AREAS OF SUB-MASTER DECLARATION FOR REFERENCE ONLY. REFER TO SUB-MASTER FLOOR PLANS FOR BOUNDARIES.

LEGEND	
	MASTER COMMON ELEMENT
	MASTER LIMITED COMMON ELEMENT ASSIGNED TO OFFICE MASTER UNIT
	MASTER LIMITED COMMON ELEMENT ASSIGNED TO RESIDENTIAL MASTER UNIT A & B

FOR REGISTRATION
Sharon A. Davis
REGISTER OF DEEDS
Durham County, NC
2019 Mar 08 04:47:22 PM
BK:13 PG:110-110
CONDOMINIUM PLATS
FEE: \$21.00
INSTRUMENT # 2019007248



FLOOR PLAN - LOWER PARKING
1/16" = 1'-0"



PROJECT INFORMATION

PROJECT NO. 564-2549-00
ISSUE DATE 01/11/19
REFERENCE BULLETIN DRAWING M-LP

PROJECT INFORMATION

ONE CITY CENTER, A MASTER CONDOMINIUM

DESCRIPTION

MASTER FLOOR PLAN - LOWER PARKING LEVEL

PRINCIPAL IN CHARGE: Tim Brown, AIA
PROJECT MANAGER: Tim Brown, AIA
DESIGN TEAM: J.C. CF

This drawing is the property of Littlefield Consulting, Inc. and is to be used only for the project and location specified. The reproduction, copying or other use of this drawing without their written consent is prohibited and any infringement will be subject to legal action.

LITTLEFIELD CONSULTING, INC.
410 Blackwell Street, Suite 10
Durham, NC 27601
T: 919.474.4500 F: 919.474.4502
www.littlefieldinc.com