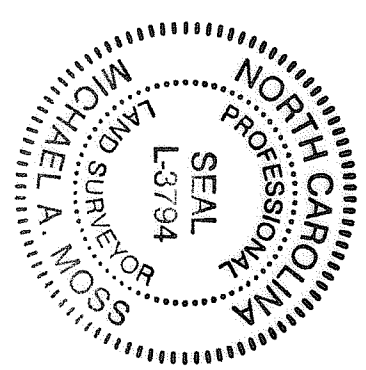
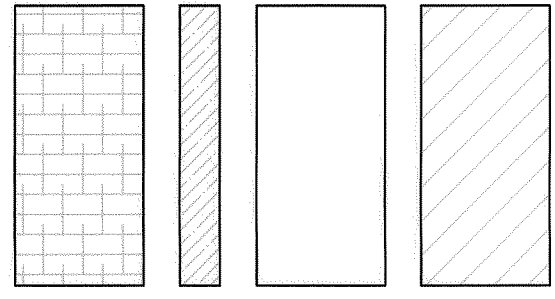
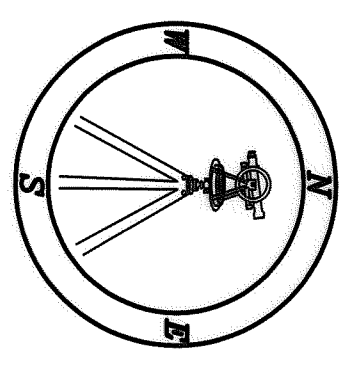
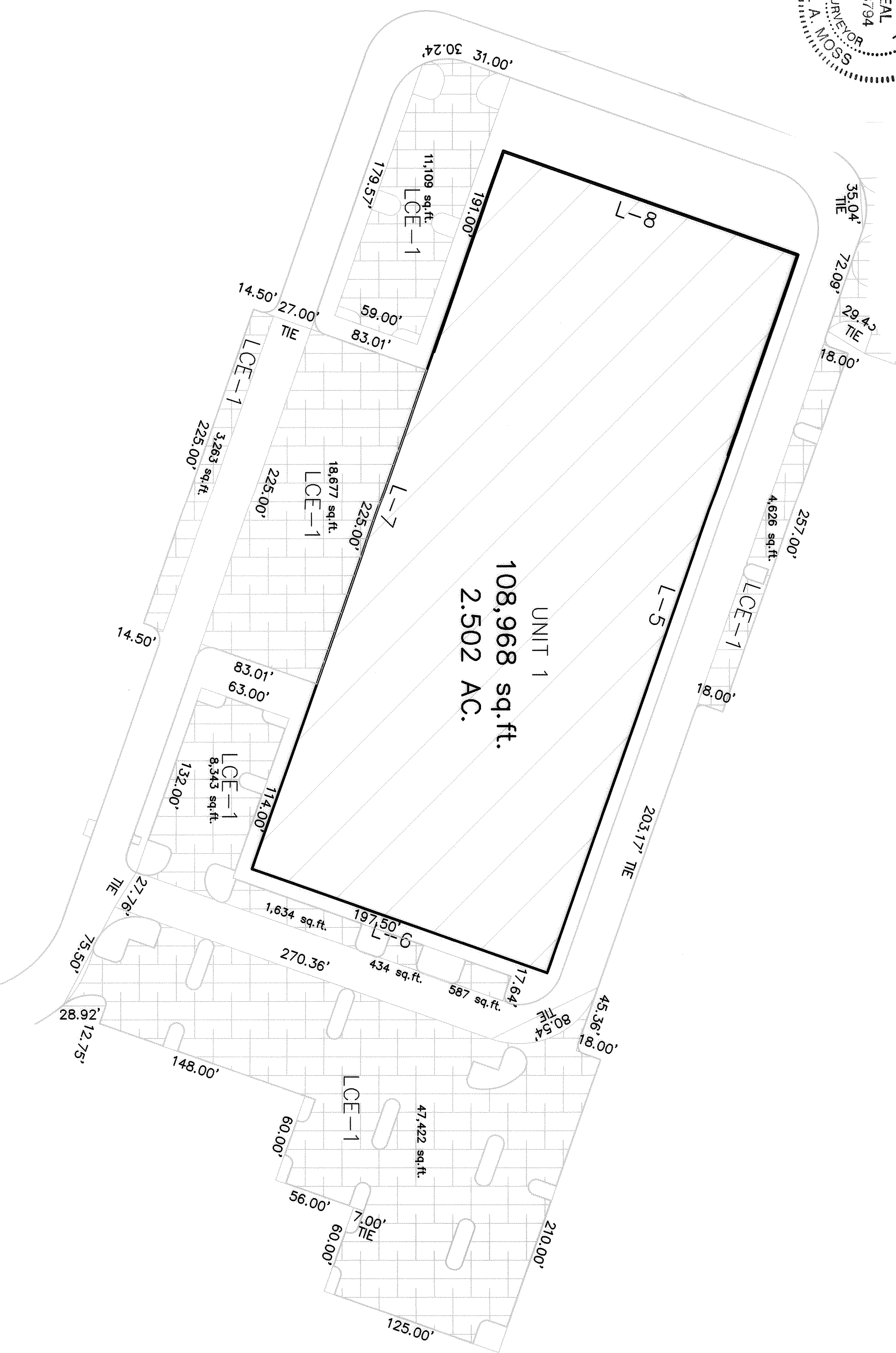




I, MICHAEL A. MOSS, A PROFESSIONAL LAND SURVEYOR LICENSED UNDER THE PROVISIONS OF CHAPTER 80C OF THE GENERAL STATUTES, HEREBY CERTIFY THAT THIS PLAT AND PLAN OF CONDOMINIUM ACCURATELY DEPICTS THE LEGAL BOUNDARIES AND PHYSICAL LOCATION OF THE UNITS AND OTHER IMPROVEMENTS RELATIVE TO THOSE BOUNDARIES.



PROFESSIONAL LAND SURVEYOR  
 6-27-18  
 L-3794



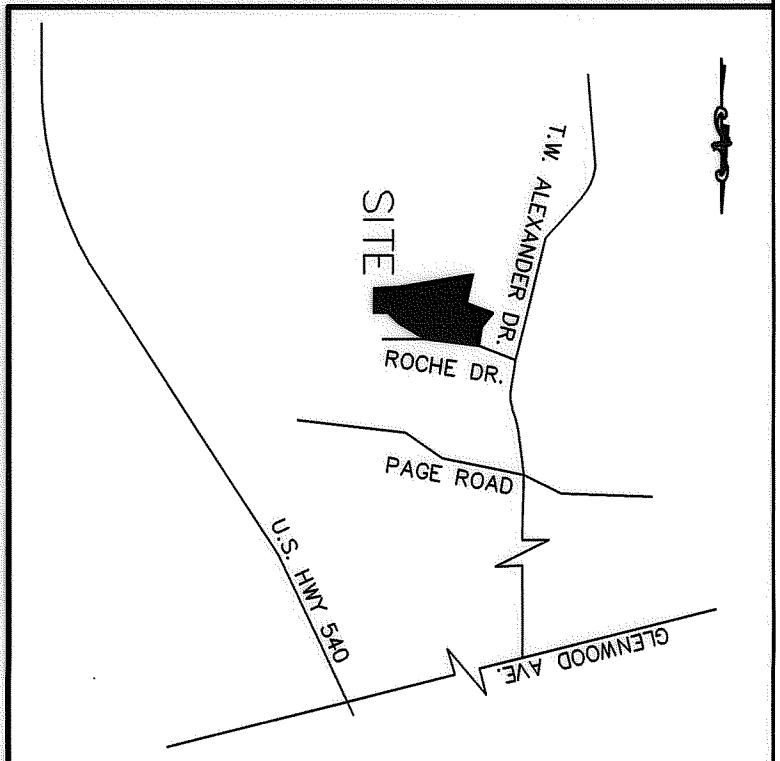
UNITS (NOTE THAT THE BUILDINGS AND IMPROVEMENTS SHOWN ON THIS PLAT ARE PART OF THE UNIT BUT ARE SEPARATE PROPERTY OWNED BY THE UNIT OWNER.)

COMMON ELEMENTS (NOTE: ALL AREAS NOT DESIGNATED AS A UNIT OR LIMITED COMMON ELEMENT, INCLUDING THE WETLANDS, ARE COMMON ELEMENTS.)

WETLANDS—PART OF COMMON ELEMENT

LIMITED COMMON ELEMENTS ("LCE"): AREAS FOR UNIT 1 ARE DESIGNATED AS LCE-1, LCE-2, LCE-3, LCE-4, LCE-5, LCE-6, LCE-7, LCE-8, LCE-9, LCE-10, LCE-11, LCE-12, LCE-13, LCE-14, LCE-15, LCE-16, LCE-17, LCE-18 ARE DESIGNATED LCE-1, LCE-2, LCE-3, LCE-4, LCE-5, LCE-6, LCE-7, LCE-8, LCE-9, LCE-10, LCE-11, LCE-12, LCE-13, LCE-14, LCE-15, LCE-16, LCE-17, LCE-18.

FOR REGISTRATION  
 SHIMMERSH  
 REGISTER OF DEEDS  
 DURHAM COUNTY, NC  
 2018 JUN 28 11:28:24 AM  
 BK13 PG61-61  
 CONDOMINIUM PLATS  
 FEE: \$21.00  
 INSTRUMENT # 2018022246



VICINITY MAP

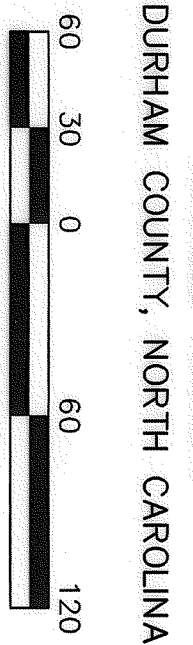
- NC GRID NAD 83(NSRS 2011)
- LEGEND:**
- EP - EXISTING IRON PIPE
  - EPK - EXISTING PK NAIL
  - N/P - NEW IRON PIPE SET
  - R/W - RIGHT OF WAY
  - CATV - CABLE TV BOX
  - EB - ELECTRIC BOX
  - TEL - TELEPHONE PEDESTAL
  - PP - POWER POLE
  - OHL - OVERHEAD LINE
  - LP - LIGHT POLE
  - WM - WATER METER
  - WV - WATER VALVE
  - CO - SEWER CLEAN-OUT

**LINE TYPE LEGEND**

Property Line - Line Surveyed
Right-of-Way
Adjoining Line - Line Not Surveyed
Overhead Line
Electric
Essential
Buffer
Flood Hazard Soils

**LINE TABLE**

LINE	BEARING	DISTANCE
L-1	S89°12'27"E	129.12'
L-2	S70°06'42"E	113.88'
L-3	S44°08'49"W	609.57'
L-4	S 41°38'33"E	514.02'
L-5	N 19°33'24"E	211.95'
L-6	S 70°37'54"E	514.02'
L-7	N 19°22'57"E	212.02'
L-8	N 70°37'00"W	522.41'
L-9	N 22°24'52"W	297.00'
L-10	S 70°37'00"E	142.00'
L-11	S 19°23'00"W	297.00'
L-12	N 70°37'00"W	142.00'
L-13	N 19°23'00"E	435.78'
L-14	S 101°7'50"W	294.00'
L-15	N 08°32'57"W	175.00'
L-16	N 81°27'03"E	294.00'
L-17	S 08°32'57"E	175.00'
L-18	S 81°27'03"W	175.00'



SCALE 1"=60'

AUGUST 12, 2017

ZONED IL

PIN # 0758-01-18-3058

SHEET 2 OF 4

PLAT OF CONDOMINIUM  
**ALEXANDER INDUSTRIAL PARK  
 CONDOMINIUM PLAT**

OWNER: BCP AIP, LLC  
 REF: D.B. 7959, PG. 186  
 REF: P.B. 182, PG. 312

TRIANGLE TOWNSHIP  
 DURHAM COUNTY, NORTH CAROLINA

CAWTHORNE, MOSS & PANCIERA, P.C. PROFESSIONAL LAND SURVEYORS, C-1525, 333 S. WHITE STREET, P.O. BOX 1253, WAKE FOREST N.C., 27588, (919) 556-3148

(ALEXANDER IND PARK.DWG-CONDO PLAT LFL)