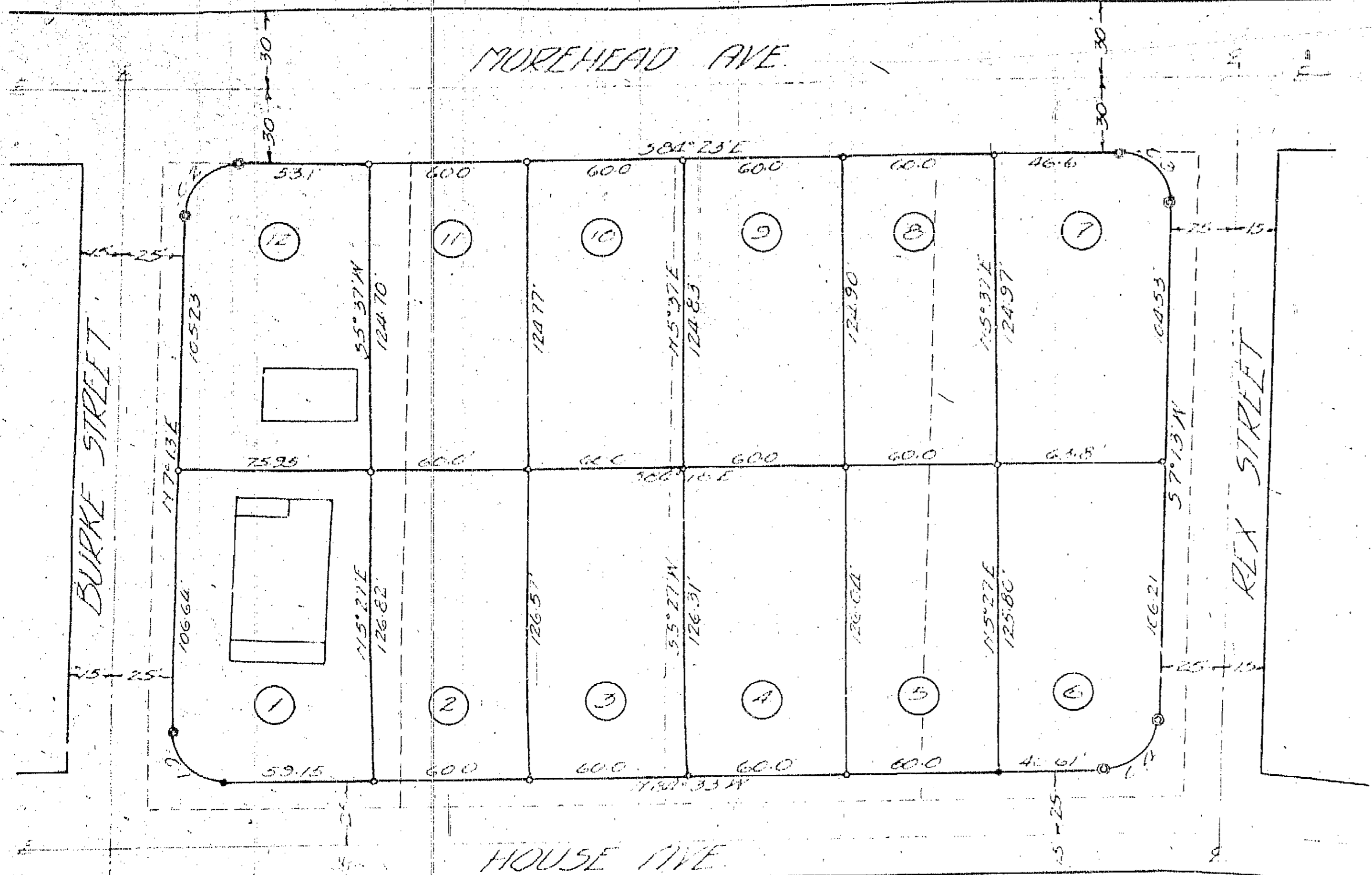


B 31-199



FINAL PLAT
 APPROVED BY THE SUBDIVISION
 REVIEW BOARD OF THE CITY OF DURHAM, N. C. BY A
 RESOLUTION ADOPTED BY IT DATED 11-20-56
W.M. Keel
 Chairman Subdivision Review Board

APPROVAL VOID
 IF NOT RECORDED WITHIN
 60 DAYS OR BY _____

CURVE	DELTA	RADIUS	CHORD	LENGTH
C-1	91° 06'	200'	206.3'	320.3'
C-2	85° 34'	200'	194.5'	30.86'
C-3	91° 06'	200'	205.7'	31.97'
C-4	88° 14'	250'	19.39'	30.80'

LEGEND
 ○ BOUNDARY MARKS
 ● MONUMENTS
 * BOUNDARY MARKS

NOTES
 BOUNDARY LINES SHOWN ARE
 OF THE SURVEY OF 1956
 AND DO NOT REPRESENT
 THE ACTUAL LOTS.

FILED
 JAN 11 1957
 REGISTER OF DEEDS
 DURHAM COUNTY, N. C.

PROPERTY
DURHAM REALTY & INV. CO.
DURHAM, N. C.
 WILL # 53 NOV. 1956

DEED
 This deed is made this 9th day of November, 1956, between Durham Realty & Inv. Co., a corporation organized under the laws of the State of North Carolina, as Grantor, and Grover L. Dillon and Dorothy Dillon McLeod, as Grantees.

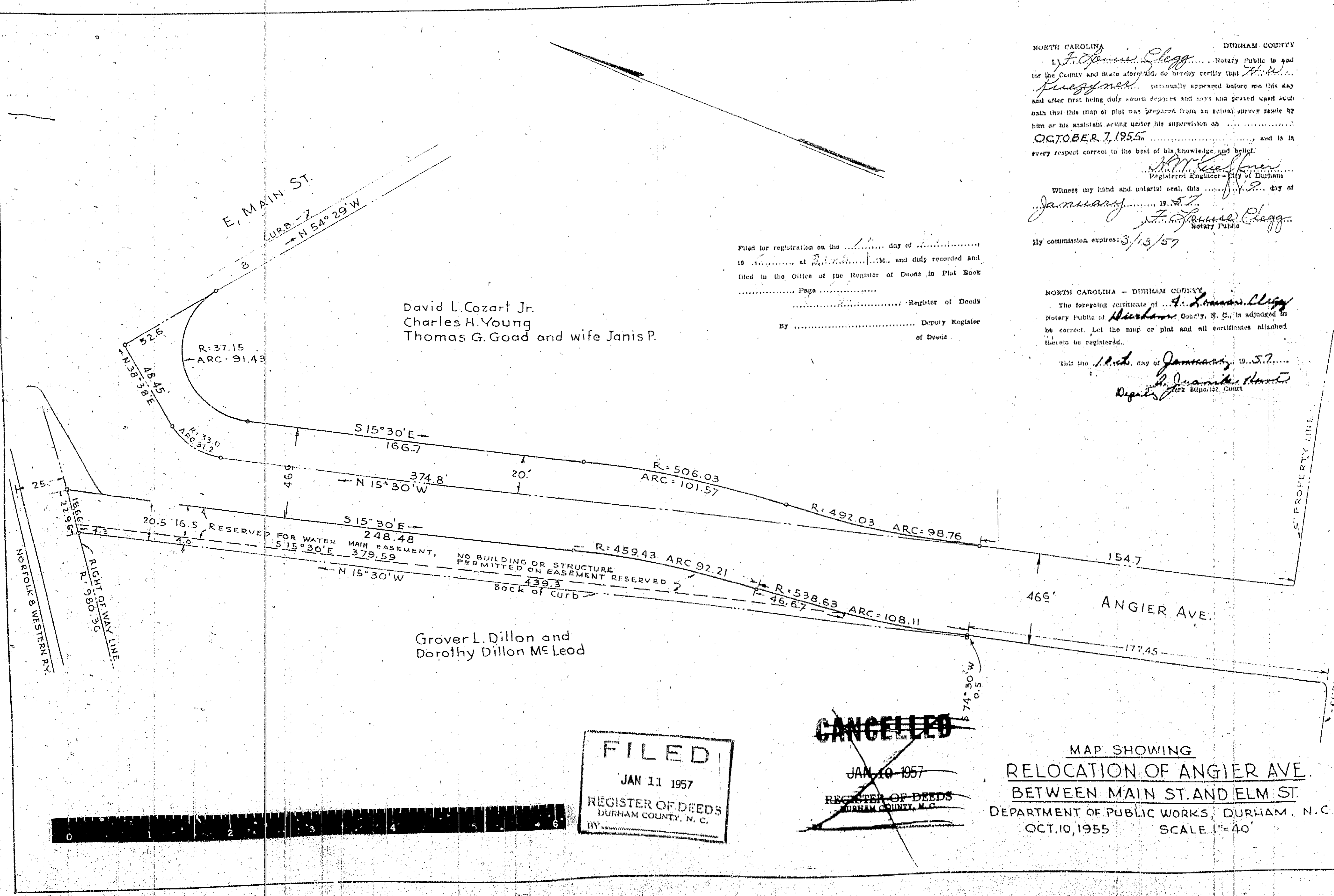
W.M. Keel
 Chairman Subdivision Review Board

W.M. Keel
 Chairman Subdivision Review Board

W.M. Keel
 Chairman Subdivision Review Board

W.M. Keel
 Chairman Subdivision Review Board

W.M. Keel
 Chairman Subdivision Review Board



NORTH CAROLINA - DURHAM COUNTY
 I, *W.M. Keel*, Notary Public in and for the County and State aforesaid, do hereby certify that *David L. Cozart Jr., Charles H. Young, Thomas G. Goad and wife Janis P.* personally appeared before me this day and after first being duly sworn depose and have and passed upon said oath that this map or plat was prepared from an actual survey made by him or his assistant acting under his supervision on OCTOBER 7, 1955, and is in every respect correct in the best of his knowledge and belief.

W.M. Keel
 Registered Engineer - City of Durham

Witness my hand and notarial seal, this 9th day of November, 1956.

W.M. Keel
 Notary Public

My commission expires: 3/13/57

FILED
 JAN 11 1957
 REGISTER OF DEEDS
 DURHAM COUNTY, N. C.

CANCELLED
 JAN 10 1957
 REGISTER OF DEEDS
 DURHAM COUNTY, N. C.

MAP SHOWING
RELOCATION OF ANGIER AVE.
BETWEEN MAIN ST. AND ELM ST.
 DEPARTMENT OF PUBLIC WORKS, DURHAM, N. C.
 OCT. 10, 1955 SCALE 1"=40'

BK
 31 B
 PG
 99

