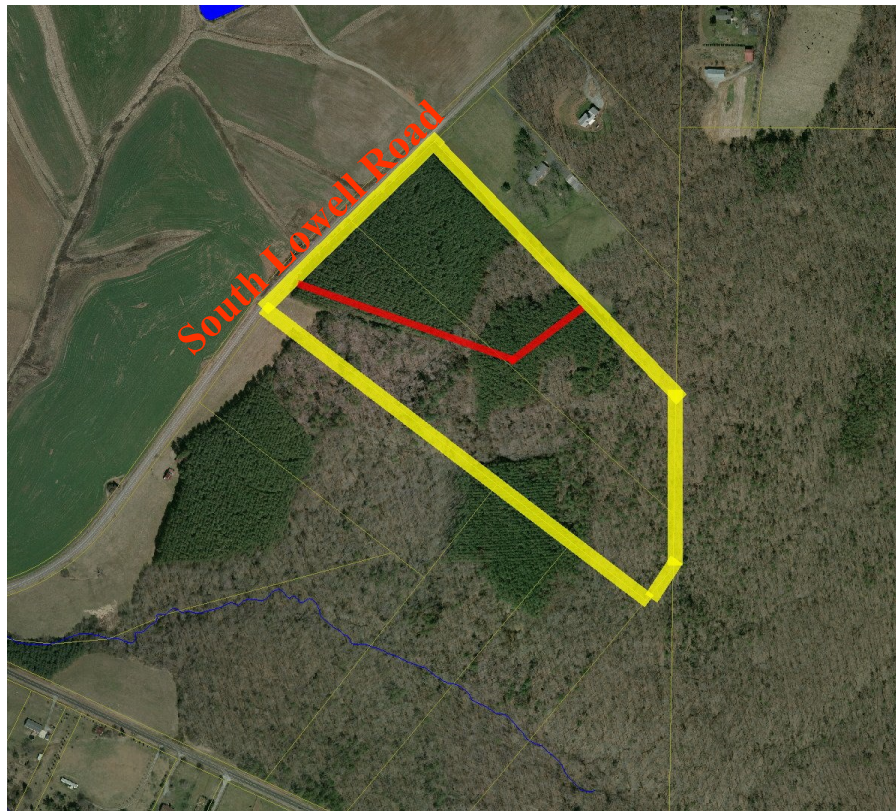


LAND FOR SALE**10070 and 10100 South Lowell Road
Bahama, North Carolina**

Wooded high ridge line home sites from 10 to 27 acres. Plat on reverse.

Private soil scientist has identified large perkable areas for septic.

Platted as two large lots (on reverse).

Lot A: 10.03 acres - \$139,000

Lot B: 17.64 acres - \$175,000

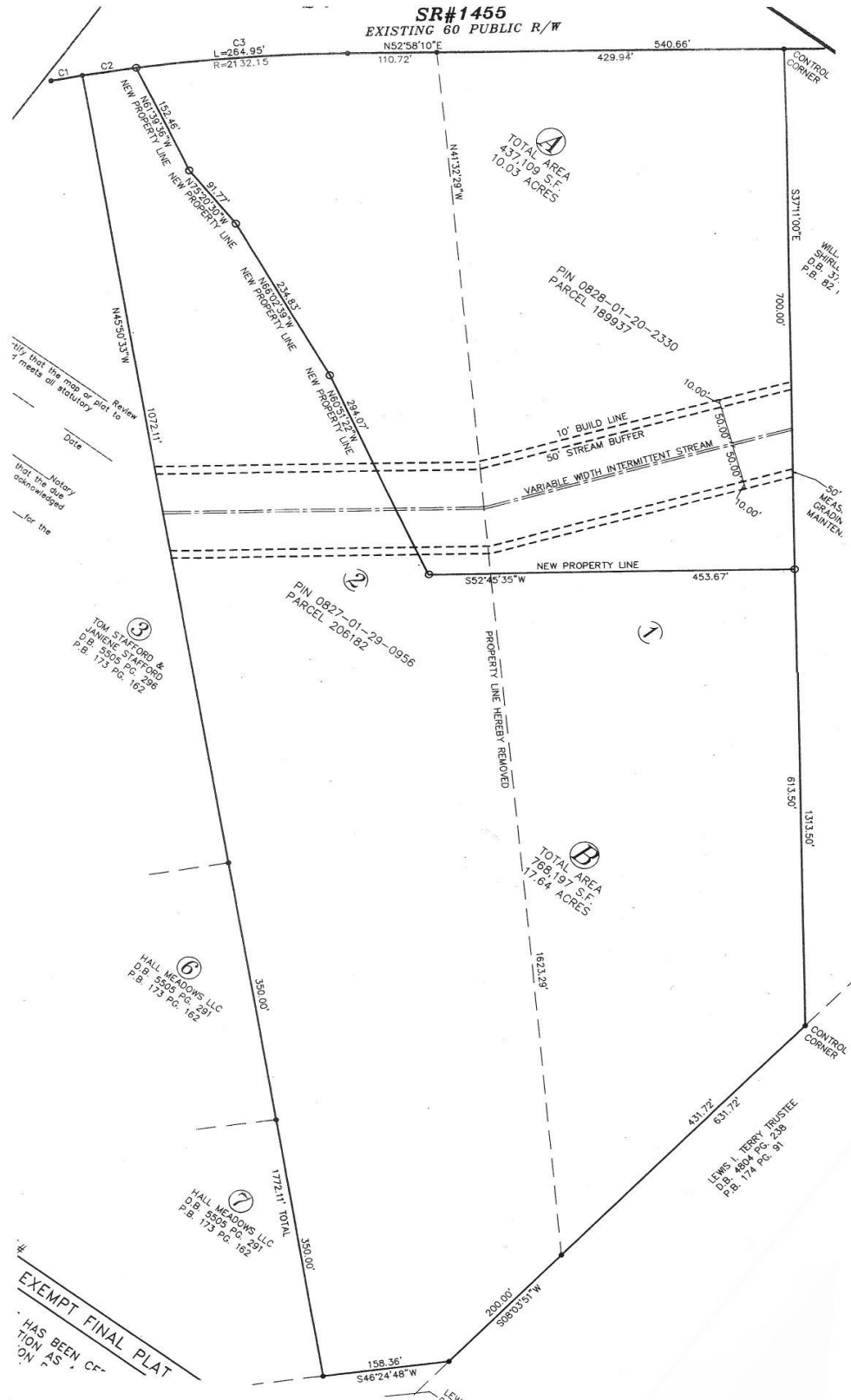
Directions: Take Roxboro Road (501) north to left at Black Horse to South Lowell Road. Go 1.5 miles. On south side of road.

For more information, please contact:

Mark O'Neal, CCIM

marko@pickett-sprouse.com | direct 919-287-3051
(919)493-0395 | Visit us at pickett-sprouse.com

SOUTH LOWELL ROAD LOTS A & B



Mark O'Neal, CCIM marko@pickett-sprouse.com | 919-287-3051
 Office: (919)493-0395 | Visit us at pickett-sprouse.com

