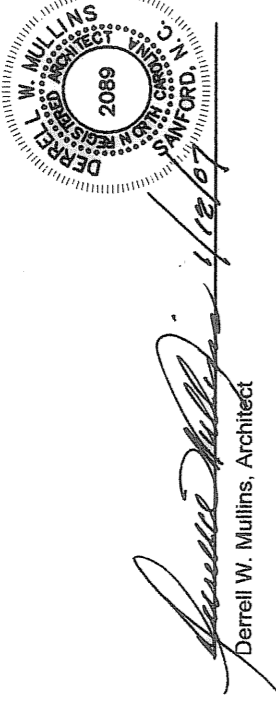
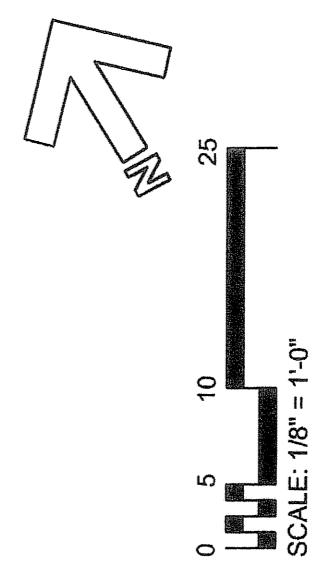
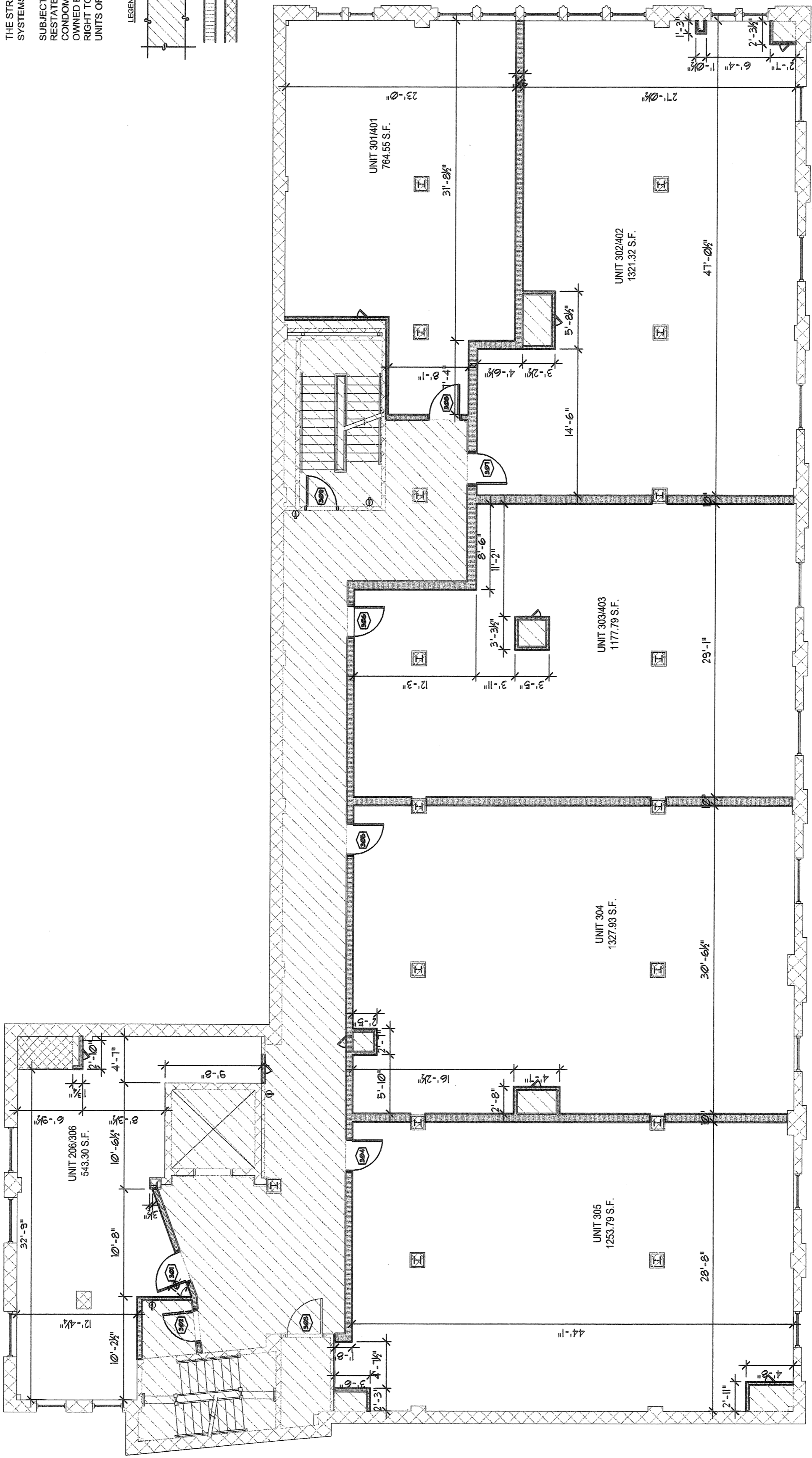
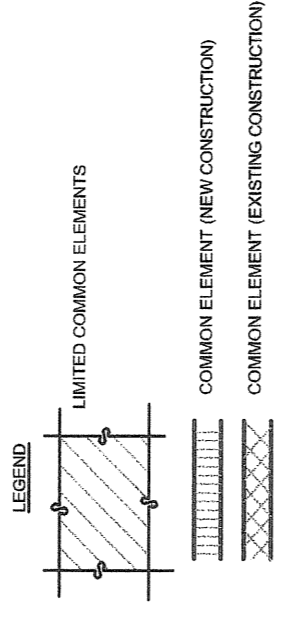


- NOTES**
- CORRIDOR IS LIMITED COMMON ELEMENT SERVING ONLY UNITS ON THIS FLOOR.
 - STARWELLS ON AND BETWEEN THE SECOND, THIRD AND FOURTH FLOORS ARE LIMITED COMMON ELEMENTS ALLOCATED ONLY TO RESIDENTIAL UNITS ON THE SECOND, THIRD, FOURTH, AND PENTHOUSE FLOORS.

THIS PLAN FULLY AND ACCURATELY DEPICTS THE LAYOUT, LOCATIONS, CEILING AND FLOOR ELEVATIONS, UNIT NUMBERS AND DIMENSIONS OF THE UNITS, AS BUILT.



THE STRUCTURAL COMPONENTS AND MECHANICAL SYSTEMS OF THE UNITS ARE SUBSTANTIALLY COMPLETE SUBJECT TO THE LIMITATIONS OF THE AMENDED AND RESTATED DECLARATION OF DURHAM KRESS CONDOMINIUM AND WITH RESPECT TO ALL UNITS OWNED BY DECLARANT, DECLARANT RESERVES THE RIGHT TO SUBDIVIDE UNITS THAT IT OWNS AND TO ADD UNITS OR COMMON ELEMENTS TO THE CONDOMINIUM.



FILED
 Condominium Book 9 Page 171
 Date 6-19-07 Time 9:34 am
 WILLIE L. COVINGTON
 REGISTER OF DEEDS
 DURHAM COUNTY, NC

THIRD FLOOR PLAN
1/8" = 1'-0"

PROJECT: DURHAM KRESS CONDOMINIUM
101-103 WEST MAIN STREET
DURHAM, NORTH CAROLINA

OWNER: DURHAM KRESS, LLC

Sheet 5 of 9