

Orange County North Carolina

400509
101 COSGROVE AVE Suite 170

MAILING ADDRESS
BLUE HORN ENTERPRISE LLC
1124 GROGANS MILL DR
CARY NC 27519

Total Assessed Value
\$685,100

KEY INFORMATION

Tax Year	2021		
Parcel ID	9799580455.005	Township	7 - CHAPEL HILL
Land Size	1.00	Land Units	LOT
Rate Code	22		
District Codes	CH CHSchoolDst., G0 County, G2 Chapel Hill		
Property LUC	Offices, Banks and Medical-Improved		
Neighborhood	C800 - 7COSGROVEHIL		
Legal Description	UNIT 170 COSGROVE HILL OFFICE CONDO P108/68-71		
Exempt Type	-		

APPRAISAL DETAILS

Total Land	\$0
Ag Credit	-
Land	\$0
Building	\$685,100
Yard Items	\$0
Market Total	\$685,100
Total Assessed	\$685,100

RESIDENTIAL

BUILDING (1)					
Type	Ofc-Condo	Total Value	\$685,100	Finished Sq Ft	3,369 sf
Style	-	Quality	Grade C+10	Condition	Average
Year Built	2009	Exterior Walls		Full Bath	0
Roof Cover		Half Bath	0	HVAC	
Bedrooms	-	Garage Type	-		

MISC IMPROVEMENTS

IMPROVEMENT TYPE	UNITS/SQ FT	EST YEAR BUILT	APPRAISED VALUE
No items to display			

SALES

SALE DATE	SALE PRICE	DEED BOOK	DEED PAGE	INSTRUMENT TYPE	GRANTOR
04/10/2015	\$775,000	5933	276		CROSLAND COSGROVE HILL OFFICE

YARD ITEMS

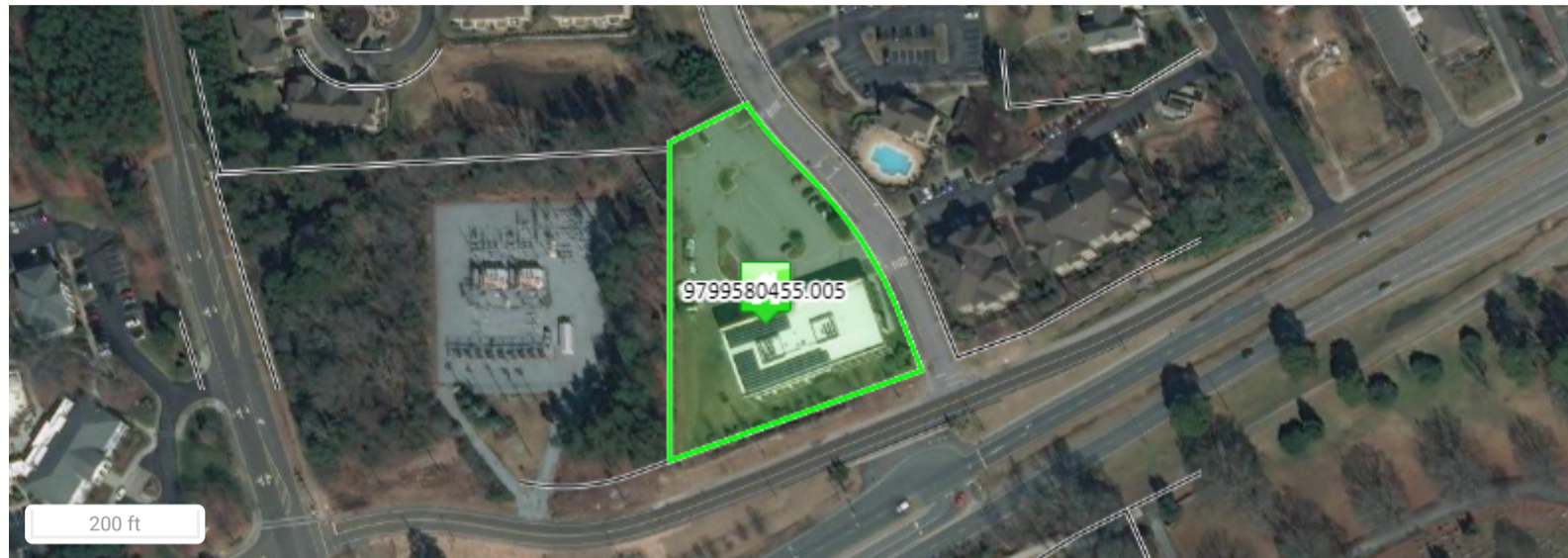
DESCRIPTION	TOTAL UNITS	YEAR BUILT	LENGTH	WIDTH	HEIGHT
No items to display					

LAND

UNIT / SOIL TYPE	DESCRIPTION	USE CODE	ACRES / LOTS	VALUE
HMOA	HMO Com Area	SITE	1	\$0

VALUE HISTORY

YEAR	TOTAL MARKET VALUE
2020	\$663,800
2019	\$663,800
2018	\$663,800
2017	\$663,800
2016	\$576,600
2015	\$576,600
2014	\$594,900
2013	\$594,900
2012	\$594,900



Unsketched Subareas:
CO Yr=2009 (3369)

Disclaimer

Orange County Assessor's Office makes every effort to produce the most accurate information possible. **No warranties, expressed or implied, are provided for the data herein, its use or interpretation.**