

1007 Slater Road, Imperial Center, Durham, NC



A FOUR-STORY OFFICE BUILDING LOCATED ON A 4.37-ACRE SITE ON SLATER ROAD IN IMPERIAL CENTER

LOCATION:	The Imperial Center is a 456-acre business campus located at the intersection of Interstates 40 & 540.
BUILDING SIZE:	76,492 square feet
AVAILABLE SPACE:	Suite 120 - 1,974 square feet
RENTAL RATE:	\$20.50 per square foot, Full Service
TENANT IMPROVEMENT ALLOWANCE:	Available
LEASE TERM:	Three (3) to ten (10) years
EXTERIOR CONSTRUCTION:	Brick and reflective glass
HVAC:	Variable air volume (VAV) HVAC system
PARKING RATIO:	4.3 spaces per 1,000 square feet leased
AMENITIES:	Men's and women's showers and lockers Walking/jogging trails throughout park Restaurants, banks, hotels and airport all in close proximity Chelsea Café



CONTACT:

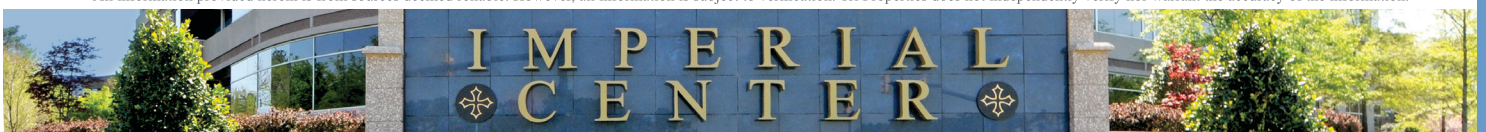
Clay Stober
919.281.2344
cstober@triprop.com

Matt Winters
919.281.2319
mwinters@triprop.com

TRI PROPERTIES INCORPORATED

4309 Emperor Boulevard, Suite 110 • Durham, NC 27703
Phone 919.941.5745 • Fax 919.941.6319 • www.triprop.com

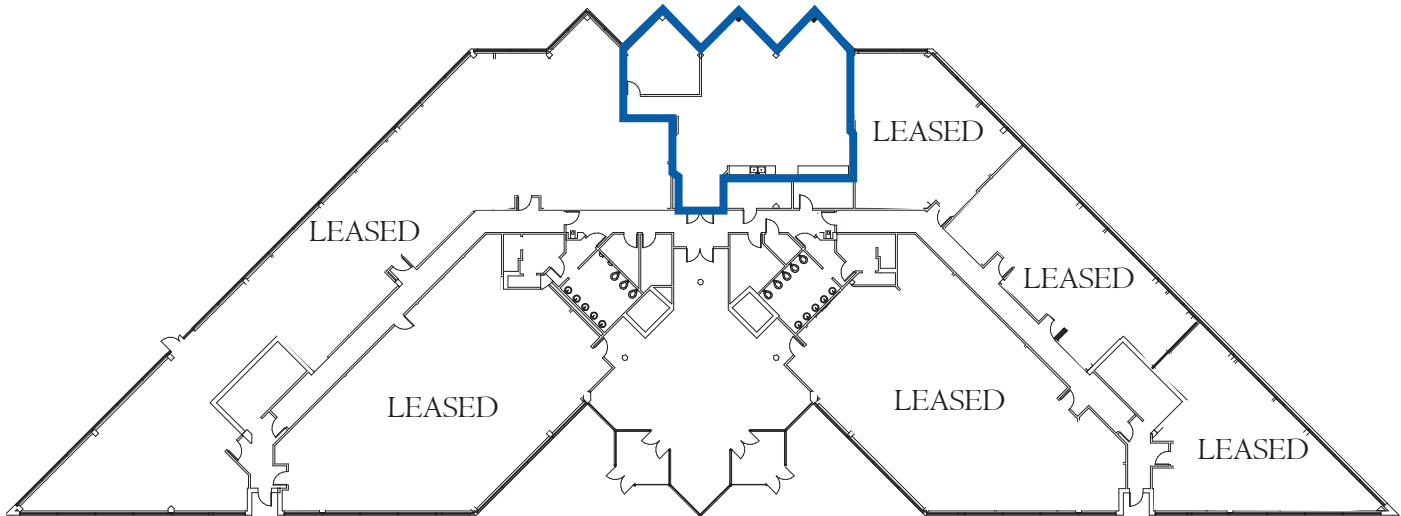
All information provided herein is from sources deemed reliable. However, all information is subject to verification. Tri Properties does not independently verify nor warrant the accuracy of the information.





1007 Slater Road, Imperial Center, Durham, NC

Suite 120
1,974 Square Feet



First Floor

CONTACT:

Clay Stober
919.281.2344
cstober@triprop.com

Matt Winters
919.281.2319
mwinters@triprop.com

TRI PROPERTIES

INCORPORATED

4309 Emperor Boulevard, Suite 110 • Durham, NC 27703
Phone 919.941.5745 • Fax 919.941.6319 • www.triprop.com

All information provided herein is from sources deemed reliable. However, all information is subject to verification. Tri Properties does not independently verify nor warrant the accuracy of the information.





IMPERIAL CENTER MASTER PLAN



All information provided herein is from sources deemed reliable. However, all information is subject to verification. Tri Properties does not independently verify nor warrant the accuracy of the information.

